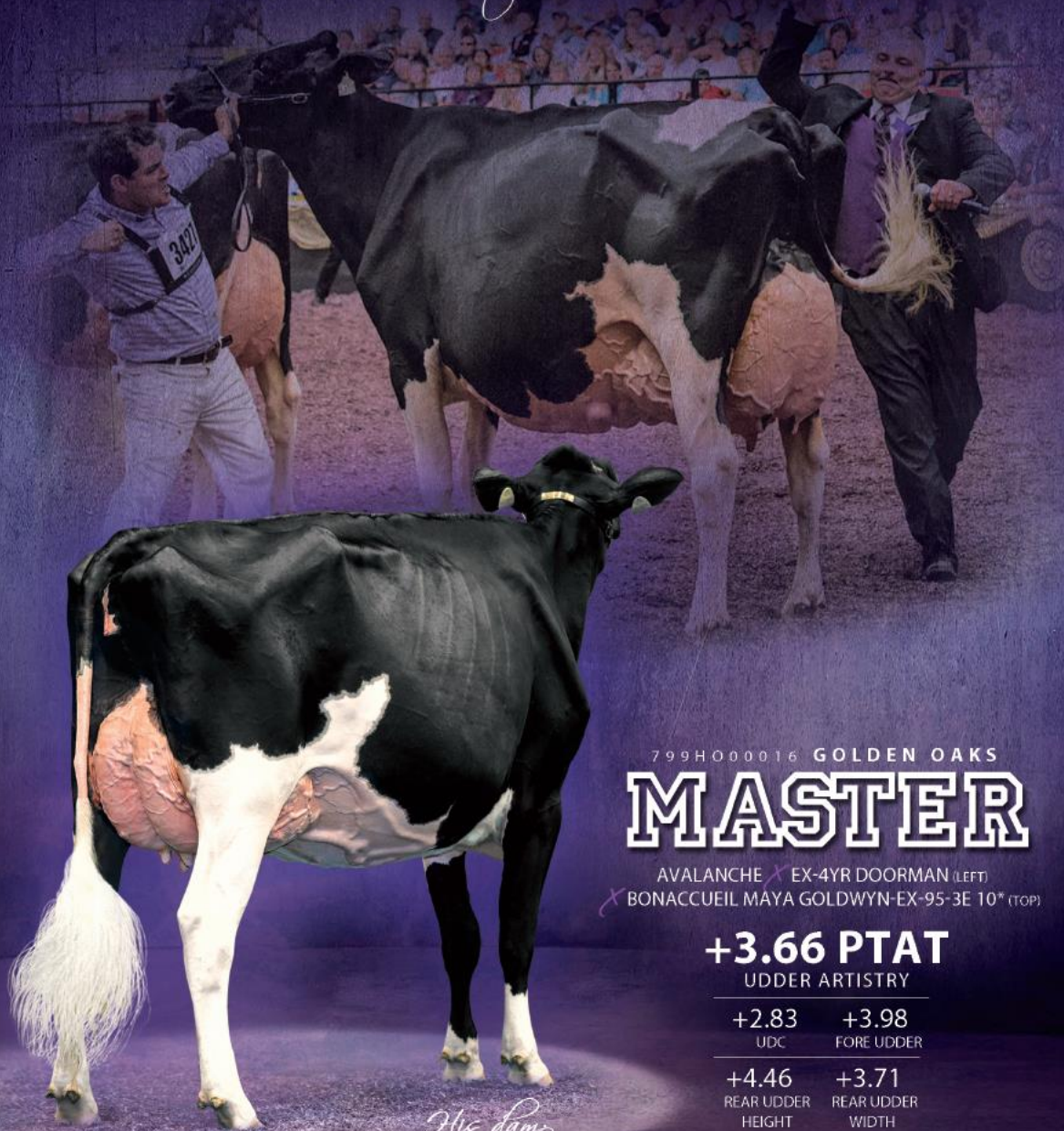


MASTERING *the* ART OF TYPE



799H000016 GOLDEN OAKS

MASTER

AVALANCHE X EX-4YR DOORMAN (LEFT)
X BONACCUEIL MAYA GOLDWYN-EX-95-3E 10* (TOP)

+3.66 PTAT
UDDER ARTISTRY

+2.83 +3.98
UDC FORE UDDER

+4.46 +3.71
REAR UDDER REAR UDDER
HEIGHT WIDTH

His dam
DROLIE DOORMAN MAYCY-EX-4YR

Blondin
SIRE

The Art of Breeding!

info@blondinsires.com | www.blondinsires.com | www.facebook.com/BlondinSires



799H000016 *Golden Oaks*
MASTER

ET BW POF A1A2 CDF CVF RDF BYF BLF MFF DPF CNF

Reg: H0840003139216917 / DOB: 09/17/2017 / RHA: 99% / aAa: 321465

SIRE
 DYMENTHOLM MR APPLES AVALANCHE

DAM
 DROLIE DOORMAN MAYCY EX
sired by Val-Bisson Doorman
 1-11 2x 305 d 10,210 Kg M 5.6%F 3.5%P

2ND DAM
 BONACCUEIL MAYA GOLDWYN EX-95-3E 10*
sired by Goldwyn
 6-05 2x 305 d 16,458 Kg M 4.4%F 3.5%P

3RD DAM
 BONACCUEIL MAYA THUNDER VG-89
 2-11 2x 305 d 11,582 Kg M 3.5%F 3.4%P

HA-USA TYPE SUMMARY 8/21			
PTAT	UDC	FLC	BSC
+3.66	+2.83	+1.29	+2.43

TPI	+2106
NM\$	-234

PRODUCTION CDCB SUMMARY GENOMIC 8/21		
Milk	-104	82%R
Fat	15	0.07%
Protein	-3	0.00%
SCS	2.86	78%R
PL	-2.7	77%R
DPR	-3.4	76%R

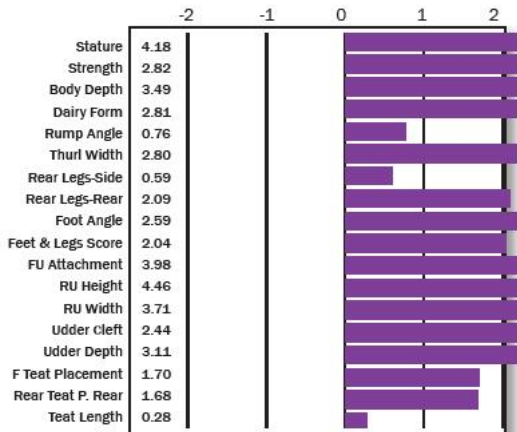
CALVING SUMMARY		
Sire Calving Ease	5.7%	87%R
Daughter Calving Ease	3.5%	69%R
Sire Stillbirth	8.3%	76%R
Daughter Stillbirth	7.0%	63%R

SCORECARD GPA 8/21		
Herds	Daughters	Reliability
0	0	80%
Conformation		13
Mammary System		10
Feet & Legs		8
Dairy Strength		10
Rump		8

LPI	2739
PRO\$	733

PRODUCTION GPA 8/21		
Milk	-45	Kg
Fat	18	Kg
Protein	3	Kg

FUNCTIONAL TRAITS	
Feed Efficiency	101
Herd Life	98
Mastitis Resistance	102
Metabolic Disease	95
Hoof Health	101
Lactation Persistency	97
Daughter Fertility	96
Milking Speed	96
Milking Temperament	103
Calving Ability	86
Daughter Calving Ability	100
Body Condition Score	99



DAUGHTER: FIREBURGER MASTER MAGNIFIC
 SOLD FOR \$25,000 IN THE LOOKOUT TAG SALE
 1ST INT. CALF & RESERVE JR. CHAMPION TROIS-RIVIERE
 Owned by Steve Morrill

